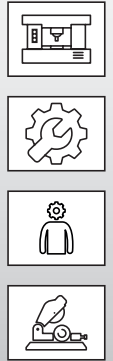
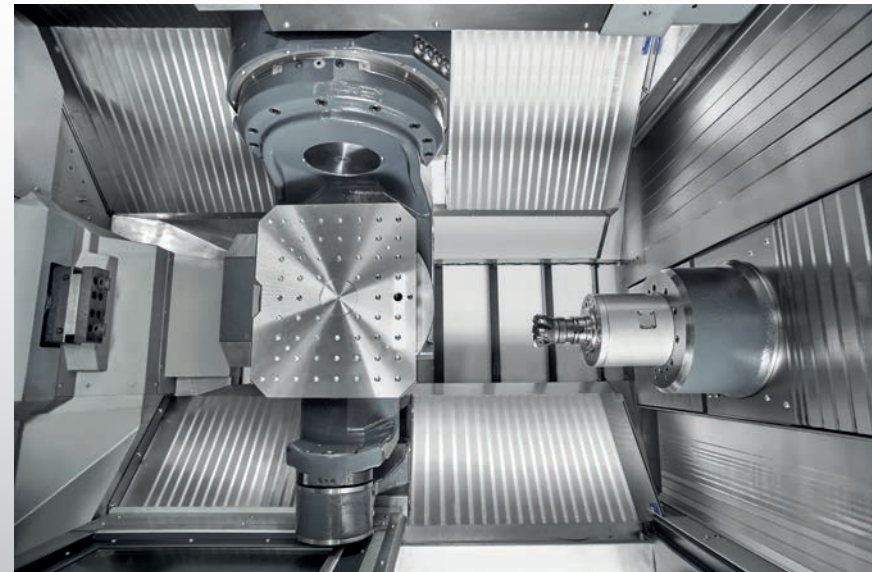


PRODUCT INFORMATION

Complete-Line – THE standard system for protective machine covers



HIGHLIGHTS

- 1 Ideal price-performance ratio
- 2 Shortest assembly times
- 3 Universally applicable
- 4 Minimum space requirement

PRODUCT DESCRIPTION

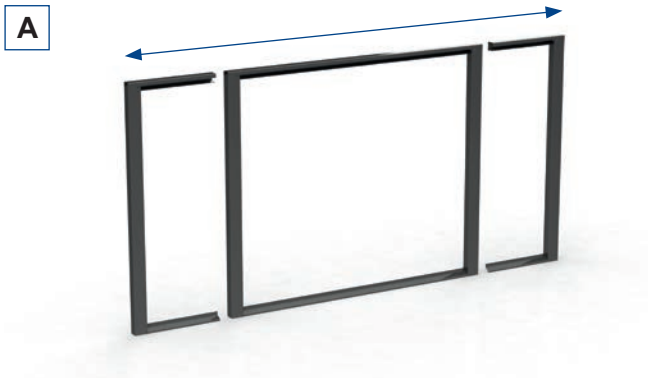
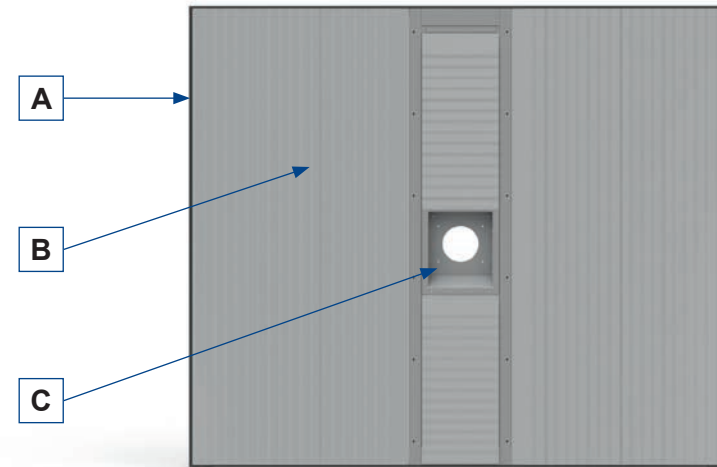
The new MöllerWerke standard system reliably protects sensitive machine components from chips, coolant or workpieces in the event of lost tension. The Complete-Line has been developed to minimise construction and assembly times, to reduce manufacturing costs and to optimise the required space.

A complete, preassembled system is delivered which has already been preset and checked for function.

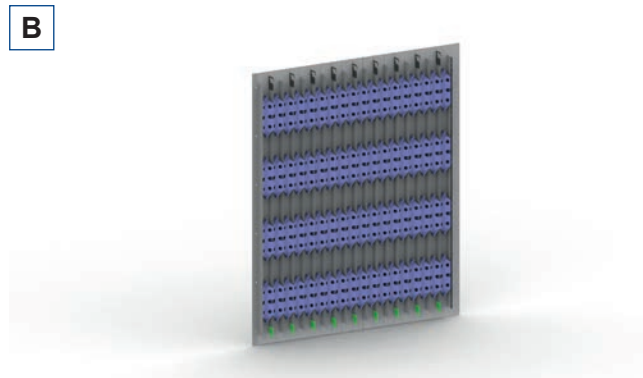
MODULAR SYSTEM

Product options

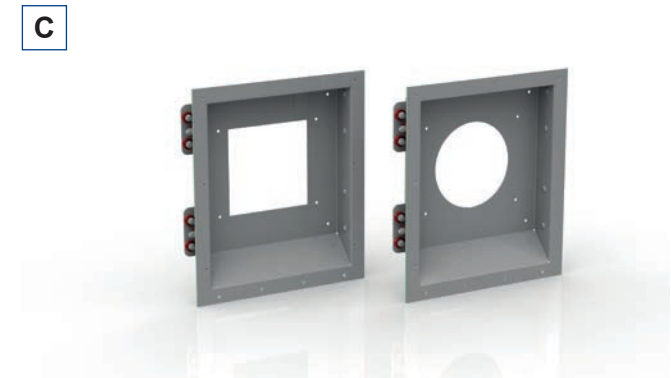
X-axis	Stroke 500–3,000 mm
Y-axis	Stroke 500–3,000 mm
Fabric bellows	Basic protection without steel lamellae in simplest design
Lightflex	Standard protection with extremely compact block size
Stahlflex	Greatest protection, available with individually replaceable scales



Standardised steel frame assumes the load-bearing function



Modular design of cover with scales



Customised spindle head cover

FURTHER FEATURES

Assembly and maintenance

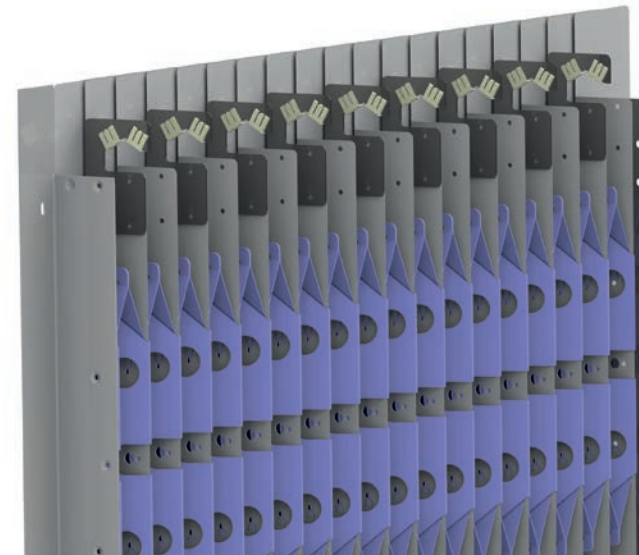
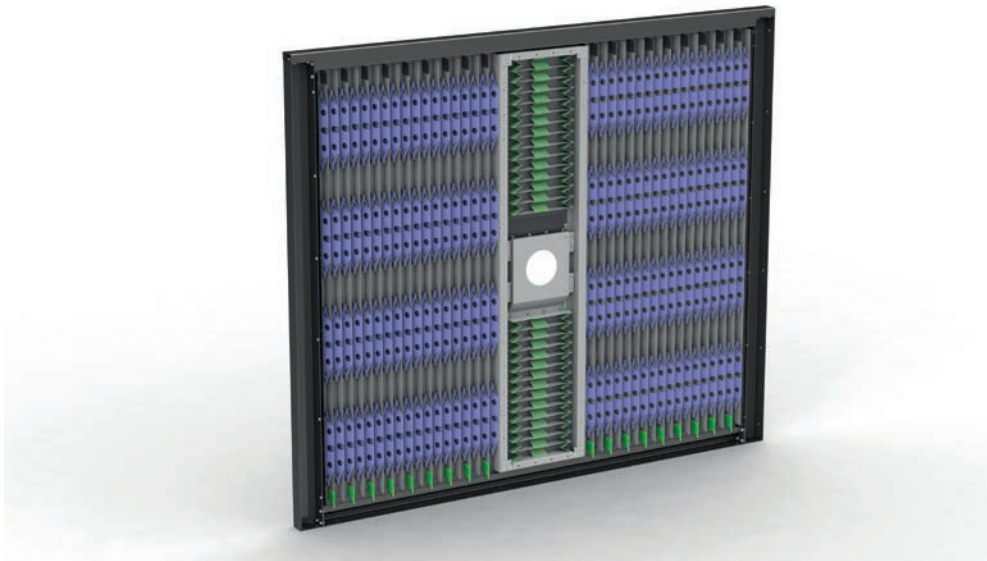
- Easiest possible connection to the machine
- Assembly requires only a few screws
- Maintenance-free sliding components
- Simple replacement of the covers if damaged
- Cover system that is factory-set

Special elements

- Wiper for Y-axis against the intrusion of spiral chips
- Lightflex Compact requires even less space
- Reinforced spring steel lamella for demanding applications
- Other special elements available on customer request

Efficiency

- Smallest space requirement with optimal functionality
- Modular design to reduce service times
- Predefined spare parts packages
- Short delivery times due to standardised components
- Hardly any construction work necessary



long-lasting CompleteLine easy to assemble cover-system individual swarf p
free assembly group robust GuideLine construction kit-system spring steel-s
individual swarf protection machine tool low required space reliability flexible
ring steel-scales standardised long-lasting CompleteLine easy to assemble c
ity flexible maintenance free assembly group robust GuideLine construction h
e easy to assemble cover-system individual swarf protection machine tool low
GuideLine construction kit-system spring steel-scales standardised long-lasti
achine tool low required space reliability flexible maintenance free assembly g
long-lasting CompleteLine easy to assemble cover-system individual swarf p
free assembly group robust GuideLine construction kit-system spring steel-s
individual swarf protection machine tool low required space reliability flexible
ring steel-scales standardised long-lasting CompleteLine easy to assemble c
ity flexible maintenance free assembly group robust GuideLine construction h
e easy to assemble cover-system individual swarf protection machine tool low
st GuideLine construction kit-system spring steel-scales standardised long-lasti
achine tool low required space reliability flexible maintenance free assembly group
ise long-lasting CompleteLine easy to assemble cover-system individual swarf prote
na free assembly group robust GuideLine construction kit-system spring steel-s
r-s individual swarf protection machine tool low required space reliability flexible
ring steel-scales standardised long-lasting CompleteLine easy to assemble c
ity flexible maintenance free assembly group robust GuideLine construction h
e easy to assemble cover-system individual swarf protection machine tool low
GuideLine construction kit-system spring steel-scales standardised long-lasti
achine tool low required space reliability flexible maintenance free assembly g
long-lasting CompleteLine easy to assemble cover-system individual swarf p
free assembly group robust GuideLine construction kit-system spring steel-s
individual swarf protection machine tool low required space reliability flexible
ring steel-scales standardised long-lasting CompleteLine easy to assemble c
ity flexible maintenance free assembly group robust GuideLine construction h

MÖLLER – COMPLETE-LINE