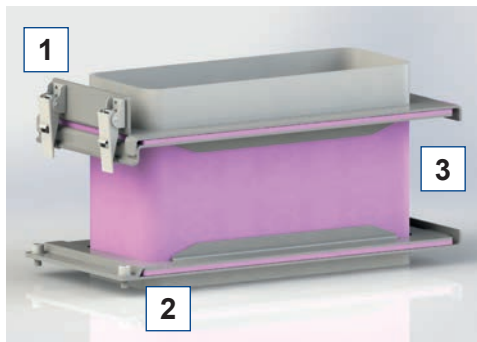


PRODUCT INFORMATION

Compensators for the railway



HIGHLIGHTS



- 1 Optimized installation with quick-release fasteners
- 2 Customized seal geometry
- 3 Tolerance compensation to neighboring components; Compensation of shifts in the system (dynamic/static)

DESCRIPTION OF THE TECHNOLOGY

Compensators are high performance, flexible connecting elements for movement and tolerance compensation in air conditioning and ventilation systems. Specially designed compensators are utilized in locomotives and passenger train coaches. Extreme installation situations can be implemented with asymmetric geometries. The connection to the respective interface is established with self-sealing flanges realized through vulcanization. As an option, the flanges can be made of aluminum or stainless steel.

TECHNICAL DATA AND BASIC GEOMETRY

Screw-Connection

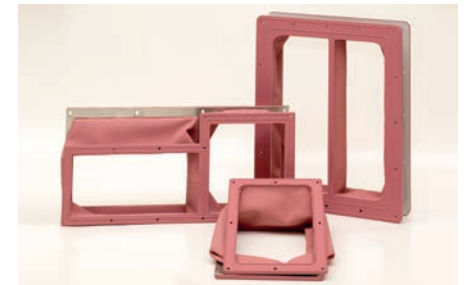
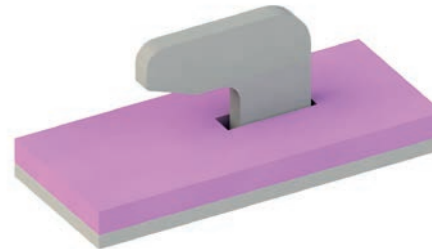
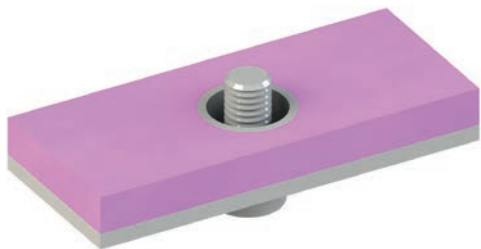
- Common and well-known connection
- Standardized joining element
- Robust and durable solution
- Expandable with screw-in bushes for defined tightening range (protection of the component, securing of the seal)

Quick-release system

- System for faster assembly of the article (installation and exchange)
- No need of additional, special tools
- Well-known and self-explanatory connection system
- Adjustable tightening torque
- Optimized accessibility for maintenance

Plug-in system

- Individually adapted mounting system
- Use for hard-to-reach or one-sided mounting areas
- Predefined tightening torque (individually defined for application)
- Both form locking and adhesion in one system



EXAMPLES OF APPLICATION



NORMS AND PARAMETERS

Fire protection classifications

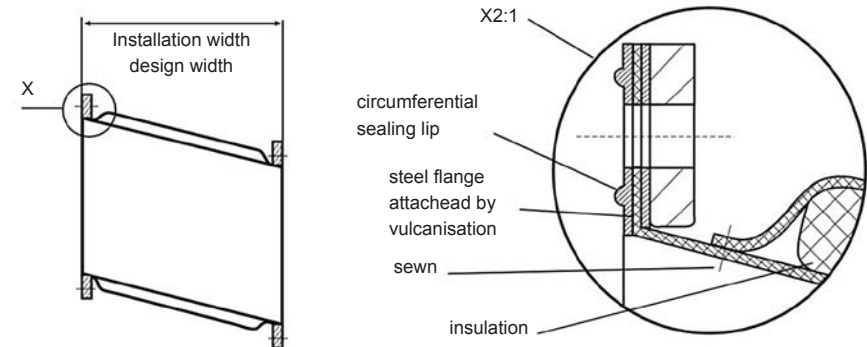
- DIN EN 45545-2
- NF F 16-101
- UNI CEI 11170
- DIN 5510-2 (2009)
- NFPA 130:2014
- GOST 12.1.04-89

Resistance

- Low temperature stability -50 °C
- Cold-break temperature -60 °C
- Max. temperature (cont.) +180 °C

PRODUCT OPTIONS

Additional insulating materials can be incorporated in the compensators to avoid cold bridges. The materials utilized for compensators comply with the fire protection classes of most European railway companies



Mounting-System Railway-Industry Robust Flanges Vulcanization M
n installation-situation Fire-Protection Individual Airflow Isolation Flexibl
ing Reliability Interface Fastener Mounting-System Railway-Industry itio
ation MVQfl Sealing-Geometry Durable Installation-situation Fire-Prot flow
Flexible Weather resistant Air-Conditioning Reliability Interface Faste stem
ndustry Robust Flanges Vulcanization MVQfl Sealing-Geometry Dura r-situa
n Individual Airflow Isolation Flexible Weather resistant Air-Conditioni Interf
Mounting-System Railway-Industry Robust Flanges Vulcanization M g-Geo
n installation-situation Fire-Protection Individual Airflow Isolation Flexibl er resi
ing Reliability Interface Fastener Mounting-System Railway-Industry ust Flan
ation MVQfl Sealing-Geometry Durable Installation-situation Fire-Protection Indi
n Flexible Weather resistant Air-Conditioning Reliability Interface Fastener Mou
ay-Industry Robust Flanges Vulcanization MVQfl Sealing-Geometry Durable In
tec n Individual Airflow Isolation Flexible Weather resistant Air-Conditioning
ast Mounting-System Railway-Industry Robust Flanges Vulcanization M
n installation-situation Fire-Protection Individual Airflow Isolation Flexibl
ing Reliability Interface Fastener Mounting-System Railway-Industry
ation MVQfl Sealing-Geometry Durable Installation-situation Fire-Prot
Flexible Weather resistant Air-Conditioning Reliability Interface Faste
ndustry Robust Flanges Vulcanization MVQfl Sealing-Geometry Dura
n Individual Airflow Isolation Flexible Weather resistant Air-Conditioni
Mounting-System Railway-Industry Robust Flanges Vulcanization M
n installation-situation Fire-Protection Individual Airflow Isolation Flexibl

MÖLLER – COMPENSATORS